

Linear actuator Kompakt



*Our elegant
model with
compact design*



Linear actuators Kompakt



Description · Applications

The linear actuators of the Kompakt series are versatile push rod actuators with compact design used mainly for

- Locking devices for rolling doors
- Tilting devices
- Turbine blade adjustment
- Operable windows
- Lifting platforms and many other applications

The facts

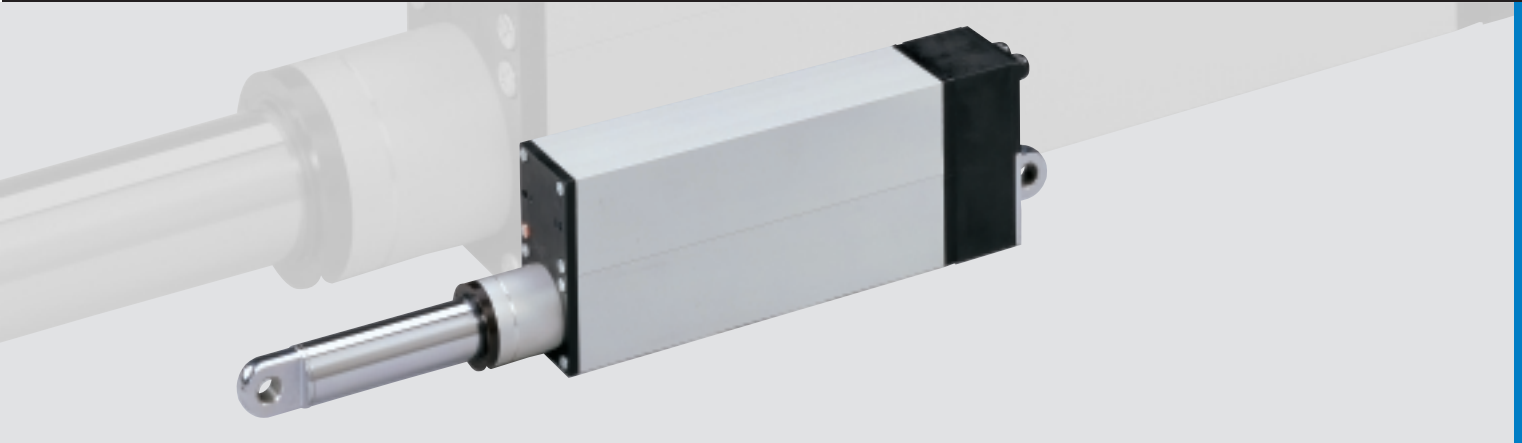
Kompakt	
Load (N)	400–15,000
Stroke speed (mm/s)	1.5–65
Standard stroke length (mm) (stroke length extension up to a max. of 500 mm in intervals of 50 mm)	200
Operating voltage	400 V/3 AC or 24 V/DC
Temperature range (°C)	–10 to +50
Protection type	IP 54
Piston rod	torsion-lock
Double scraper ring	at piston outlet
Limit switch	adjustable, with status signal
Design	extremely short thanks to special elero technology

Load (N) and stroke speeds (mm/s)

Version	400 V-3 AC 50 Hz Rating: S3 – 15%			24 V DC Rating: S3 – 15%			24 V DC Rating: S1			Number of add. planetary gear stages	Available with brake only
	Stroke speed mm/s	Load N	Nominal current A	Stroke speed mm/s	Load N	Nominal current A	Stroke speed mm/s	Load N	Nominal current A		
A	65	1,000	1.3	55	700	10	–	–	–	–	x
B	45	1,500	1.3	35	1,000	10	–	–	–	–	x
C	17	4,000	1.3	17	1,500	10	22	400	5	–	x
D	12	7,000	1.3	12	2,600	10	15	1,000	5	–	–
E	7	12,000	1.3	7	5,500	10	9.5	1,800	5	–	–
F	5.5	15,000	1.3	4.5	8,000	10	5.5	2,500	5	1	–
G	4	15,000	1.3	3	11,000	10	4	4,500	5	1	–
H	2	15,000	1.3	2	15,000	8	2.5	8,500	5	1	–
I	1.6	15,000	1.3	1.5	15,000	5	1.5	15,000	5	1	–

Note: All technical data represent average values and are based on an ambient temperature of 20 °C. Stroke speeds of direct current motors are load and temperature dependent.

Our elegant models

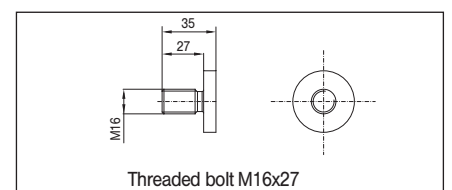
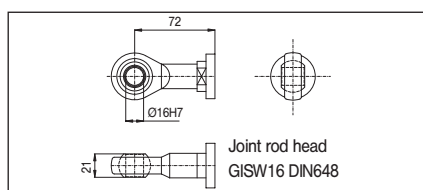
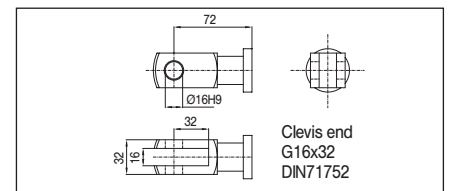
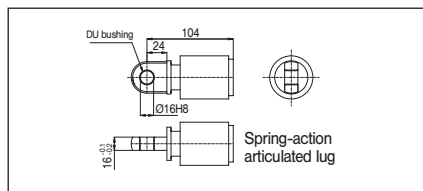
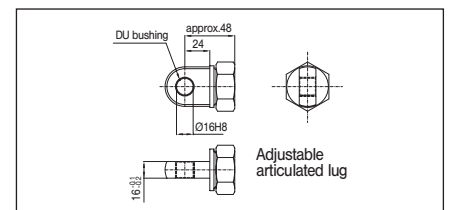
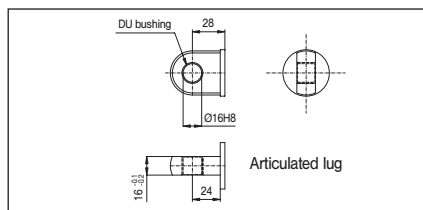


Options

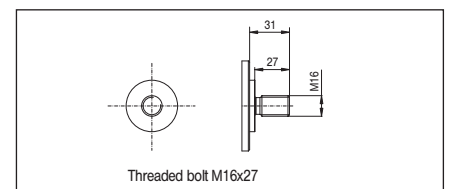
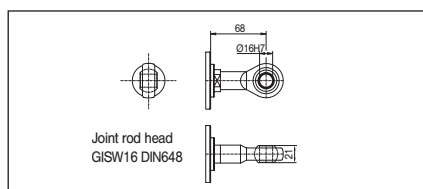
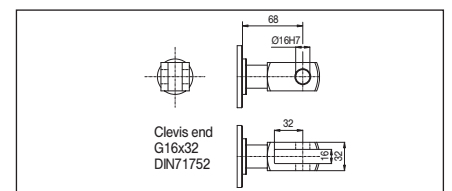
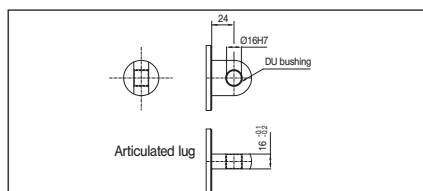
- Potentiometer for output of a stroke-dependent resistance value
- Encoder
- Brake
- DIN 71752 clevis end G 16 x 32 on piston and/or housing end
- DIN 648 joint rod head GISW 16 on piston and/or housing end
- Spring-action articulated lug on piston end
- Adjustable articulated lug on piston end

Other stroke lengths, special voltages, circuit variants, cable types as well as additional equipment (protective sleeve, recirculating ballscrew, plug connections, etc.) on request.

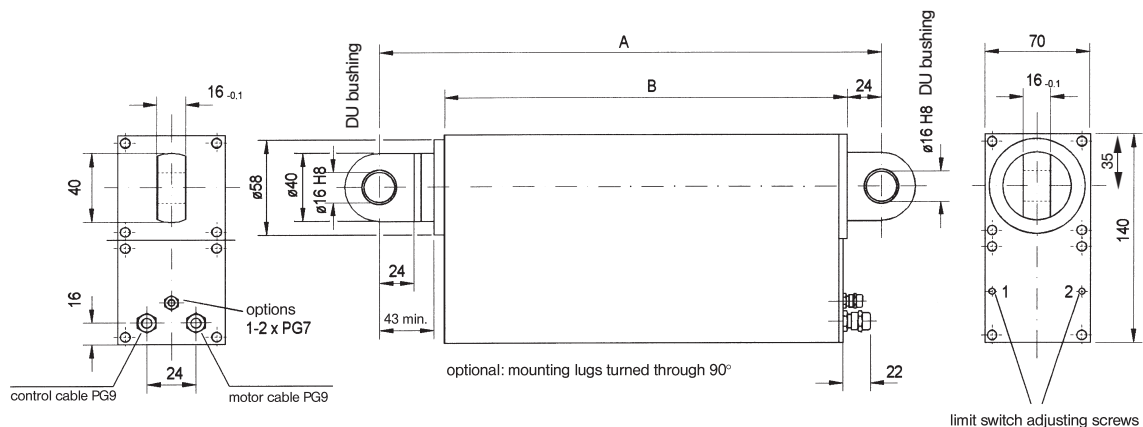
Fixing on piston end



Fixing on housing end



Technical data and dimensions



Dimension A

Stroke length	Dimension A	
	min.	max.
200	450*	650*
250	500	750
300	550	850
350	600	950
400	650	1050
450	700	1150
500	800	1300

Dimension A increases by

- + 44 mm with an attached clevis end/joint rod head
- + 75 mm with an attached spring-action articulated lug

*ATTENTION:

If the body dimension is 426 mm, dimension A increases by 50 mm.

Dimension B

Basic version	376
With additional planetary gear stage and (potentiometer or brake)	426
With brake and potentiometer	426

elero GmbH

Linearantriebstechnik

Nassaeckerstrasse 11

D-07381 Poesneck

Phone +49 (0) 3647 / 46 07-0

Fax Reception +49 (0) 3647 / 46 07-40

Fax Purchasing department -41

Fax Sales department -42

Head office:

Linsenhofer Str. 59-63

D-72660 Beuren

Phone +49 (0) 70 25 / 13-02

Fax Reception +49 (0) 70 25 / 13-212

info@elero-linear.de

www.elero-linear.com